



60200 MODULE

INSTALLATION GUIDE

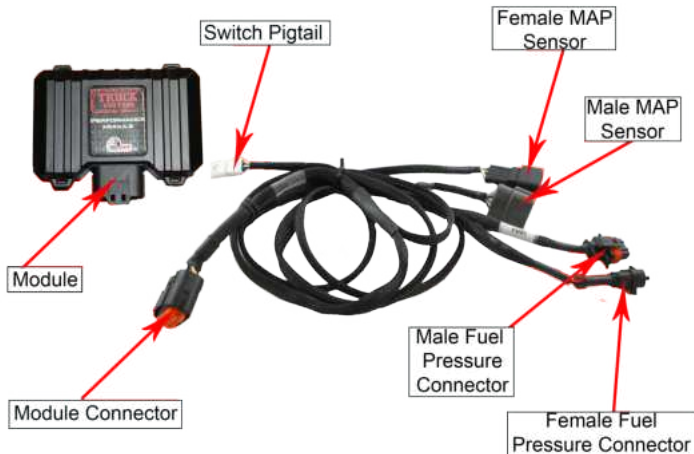
— 2007.5–2013 —
RAM 6.7L CUMMINS

UP TO 90HP GAIN
1-3 MPG FUEL SAVINGS

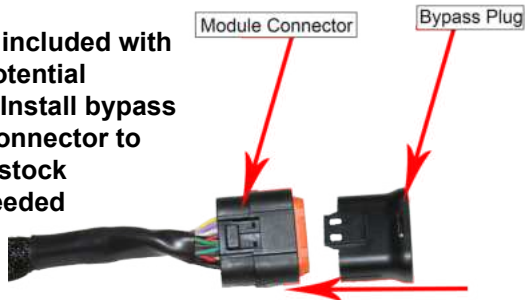


AGDIESELSOLUTIONS.COM





A bypass plug is included with the module for potential troubleshooting. Install bypass plug in module connector to return vehicle to stock functionality if needed



Make sure to push completely together until connector snaps when using bypass plug.

For Tech Support Please Call 812-618-9168

PSI Power recommends removing the Ag Diesel Solutions module before any warranty work is performed on the piece of equipment the module is installed on.

Adjustable on the fly

- Position 1- Stock (counter clockwise)**
- Position 2- Low- up to 30HP**
- Position 3- Medium- Up to 60HP**
- Position 4- High- Up to 90HP**

Position 1- Switch far left
Position 4- Switch far right



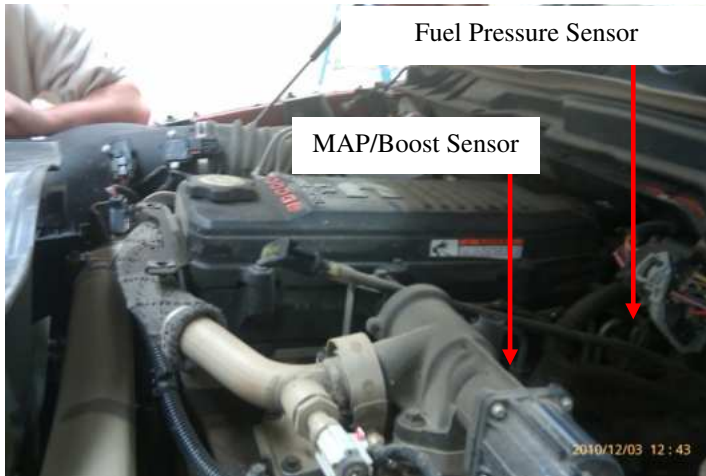
Module switch can be ran inside the cab for easy performance adjustment. Module switch can be secured in engine bay if desired. Module will default to HIGH setting if switch is not connected

NOT FOR USE IN CALIFORNIA

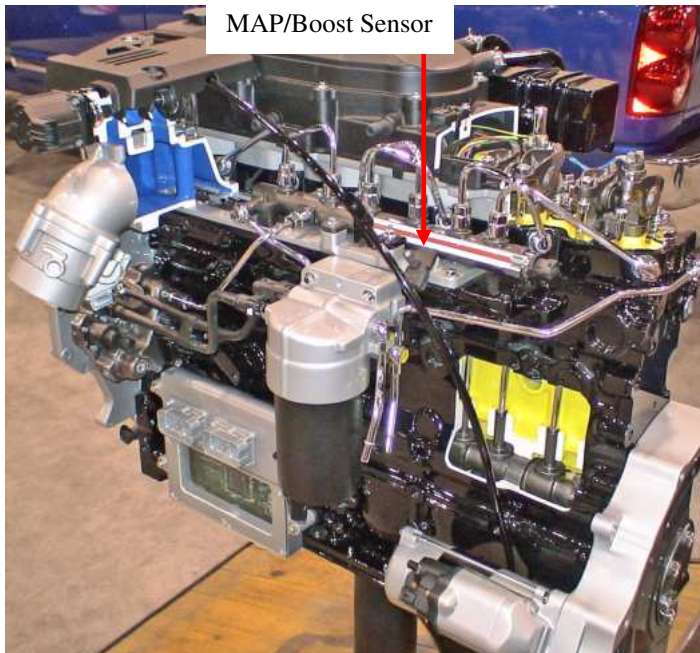
MODULE DOES NOT BYPASS, DELETE, OR DEFEAT ANY EMISION CONTROL SYSTEMS

*If installation assistnace is needed, Ag Diesel Solutions is not responsible for any cost associated with third party installation.

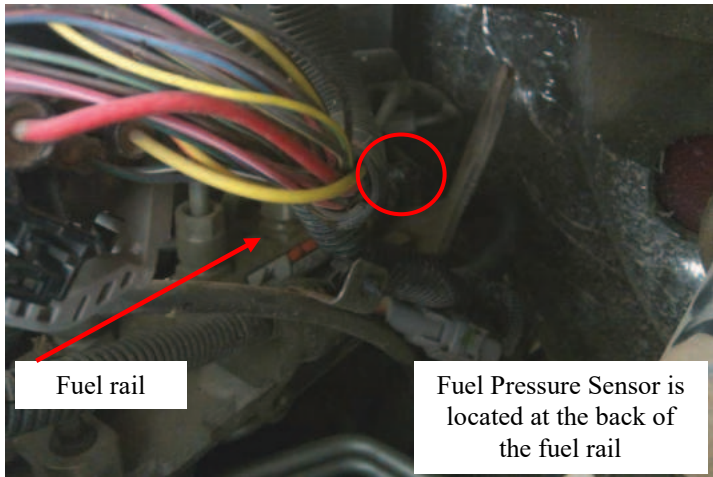
07.5-13 6.7L Dodge Cummins Engine Installations Instructions



NOTE: If you do not see your MAP Sensor located where indicated on the picture above, we have seen some models with the MAP Sensor located where indicated on the picture below.



- 1) Locate Fuel Pressure Sensor on the drivers side of the engine



- 2) Unplug fuel pressure sensor.

- 3) Plug male connector from module into Fuel Pressure Sensor.
Note: Make sure to push completely together until the connector snaps

- 4) Connect the Stock Cummins connector to the Female connector from the module

Note: Make sure to push completely together until the connector snaps



5) Locate the MAP sensor



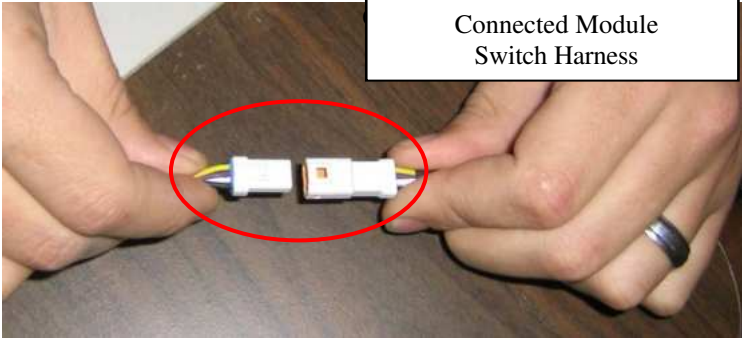
6) Unplug the MAP sensor and Plug in the male plug from the module into the sensor



7) Plug the Stock Cummins MAP sensor connector into the female Map sensor plug on the module harness

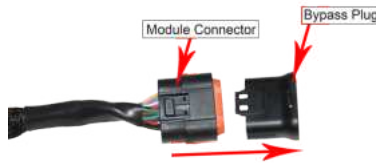


- 8) Route Switch through firewall and plug into module as shown below



- 9) Remove the bypass plug from the Ag Diesel Solutions harness, and plug the harness into the module.

Note: Keep the bypass plug for potential troubleshooting.



- 10) Mount the module box in a safe location using the zip ties to secure the wires and module away from any extreme heat and moving parts. **Note: Mounting the module with the connector down will help prevent moisture from collecting into the module connector.**



6.7 Cummins Shim Kit Instructions

- 1) Remove Cover shown below by removing the oil dipstick and 4 bolts holding cover to engine



- 2) Using an 11mm wrench remove the 2 clamps holding the EGR tube that crosses in front of the valve cover.

Note: You don't have to remove the tube just tilt the tube up towards the front of the truck

- 3) Use a 10mm Socket and remove the bolt that holds the dipstick tube to the bracket and the 6 bolts that hold the air horn to the manifold.



Note: Make sure not to damage the gasket.

4) Slide the air horn forward so that you can access the front end of the fuel

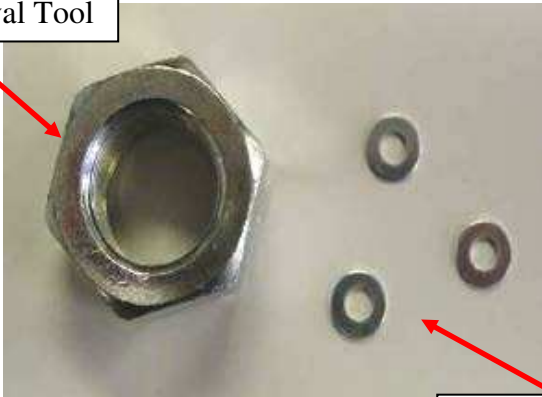


Fuel Relief Valve

5) Use an 18mm wrench to remove fuel relief valve



Removal Tool



.020" Shims



- 6) Thread removal tool on to Fuel Relief Valve and place tip of fuel relief valve into vise as shown above
- 7) Rotate removal tool toward the vise to split apart relief valve.



Tip

Note: Be careful to hold end of relief valve it is spring loaded and you don't want to lose any part. There is a small pin located in Tip behind the washer with three holes in it. Don't lose it, the truck will not run without it.



- 8) Remove the spring and insert the three shims as shown above



9) Making sure you don't lose any parts, replace spring into relief valve and put tip back together.

10) Place in vise and tighten to compress relief valve together

Note: Use a small piece of wood or cardboard, between tip and vise to eliminate the possibility of damaging the fuel relief valve.

11) Take a small punch and re-apply the 3 factory indentations used to hold tip into the body of the relief valve

12) Replace Valve back into Vehicle, torque the Relief Valve to 75 ft-lbs. or fuel could bypass valve.

13) Replace air horn, making sure the gasket is lined up correct

14) Twist EGR tube down and replace the clamps

15) Replace cover and dipstick

THIS IS A HIGH PERFORMANCE PRODUCT. USE AT YOUR OWN RISK.

Do not use this product until you have carefully read the following agreement. This sets forth the terms and conditions for the use of this product. The installation of this product indicates that the BUYER has read and understands this agreement and accepts its terms and conditions

DISCLAIMER OF WARRANTY AND LIMITATION OF LIABILITY

PSI Power, Inc and its successors, distributors, jobbers, and dealers (hereafter "SELLER") shall in no way be responsible for the product's proper use and service. It is the installer's responsibility to check for proper installation and if in doubt, contact the manufacturer. The SELLER assumes no liability regarding the improper installation or misapplication of its products. BUYER ACKNOWLEDGES IT HAS HAD THE OPPORTUNITY TO FULLY INSPECT THE PRODUCT. ACCORDINGLY, BUYER ACKNOWLEDGES THAT THE PRODUCT IS BEING SOLD IN "AS IS/WHERE IS" CONDITION AND WITH ALL FAULTS. EXCEPT AS OTHERWISE PROVIDED HEREIN, THERE ARE NO EXPRESS WARRANTIES WITH RESPECT TO THE GOODS, AND ALL IMPLIED WARRANTIES, INCLUDING BUT NOT LIMITED TO, IMPLIED WARRANTIES OF FITNESS FOR A PARTICULAR PURPOSE AND MERCHANTABILITY ARE LIKewise HEREBY EXPRESSLY AND FULLY DISCLAIMED. SELLER SHALL NOT BE HELD LIABLE FOR SPECIAL, INDIRECT, INCIDENTAL OR CONSEQUENTIAL DAMAGES OF ANY NATURE WITH RESPECT TO THE PRODUCTS (INCLUDING, WITHOUT LIMITATION, LOST PROFITS, LOST SALES, LOSS OF PRODUCTION, PROPERTY DAMAGE, PERSONAL INJURY OR LOSS OR DAMAGE RESULTING FROM INTERRUPTION OR FAILURE IN OPERATION OF THE PRODUCTS) AND BUYER HEREBY EXPRESSLY WAIVES AND DISCLAIMS ALL SUCH LIABILITY CLAIMS. THE BUYER ACKNOWLEDGES AND AGREES THAT THE DISCLAIMER OF LIABILITY CONTAINED HEREIN IS A MATERIAL TERM OF THE SALE OF THE PRODUCT AND, TO THE FULLEST EXTENT PERMITTED BY LAW, BUYER SHALL DEFEND, INDEMNIFY AND HOLD SELLER HARMLESS FROM ANY AND ALL CLAIMS, DEMANDS, CAUSES OF ACTION, CONTROVERSIES, LIABILITIES, FINES, LOSSES, COSTS AND EXPENSES (INCLUDING, BUT NOT LIMITED TO ATTORNEYS' FEES, EXPERT WITNESS EXPENSES AND LITIGATION EXPENSES) ARISING FROM OR RELATED TO SELLER'S PRODUCTS.

LIMITED 3 YEAR WARRANTY

PSI Power, INC. (hereafter "SELLER") warrants that the product supplied shall conform to SELLER's specifications and shall be free from defects in design, material or workmanship for 3 years to the original BUYER. This warranty shall not be extended, transferred, assigned or varied except by a written instrument signed by SELLER and BUYER. Products that have been returned to SELLER during the warranty period and accompanied by a dated proof of purchase receipt, with shipping and handling paid by the BUYER, and found to be defective in design, material, or workmanship, in SELLER's sole discretion, may be repaired or replaced at SELLER's option and cost. All warranty claims hereunder are subject to approval by SELLER upon examination of the product. If the product is found not to be defective by SELLER, the product may be returned to BUYER at BUYERS cost. Under no circumstances shall the SELLER be liable for any labor charged or travel time incurred in diagnosis for defects, removal, or reinstallation of this product or any other expenses. This warranty is void on any products that show evidence of misapplication, negligence, improper installation, abuse, lack of proper maintenance or alteration from its original design.

IN THE EVENT THAT THE BUYER DOES NOT AGREE WITH THIS AGREEMENT, THE BUYER MAY PROMPTLY RETURN THIS PRODUCT, IN A NEW AND UNUSED CONDITION, IN THE ORIGINAL PACKAGING, WITH A DATED PROOF OF PURCHASE, TO THE PLACE OF PURCHASE WITHIN (30) DAYS FROM THE DATE OF PURCHASE FOR A FULL REFUND. THE INSTALLATION OF THIS PRODUCT INDICATES THAT THE BUYER HAS READ AND UNDERSTANDS THIS AGREEMENT AND ACCEPTS ITS TERMS AND CONDITIONS

Effective 11/1/2022



- UP TO 30% HORSEPOWER INCREASE
- UP TO 10%–20% IN FUEL SAVINGS
- DOES NOT FLASH THE FACTORY ECM
- FIELD TESTED & DYNO PROVEN
- PLUG & PLAY INSTALLATION

Performance Electronics for Agriculture, Forestry, Construction, Pick-Up Trucks, Medium Duty Trucks, RVs, Heavy Duty Semis , and more!



LEARN MORE: AGDIESELSOLUTIONS.COM

