

**INSTALLATION
GUIDE**



CAPS8390 MODULE

**8.3L & 9.0L CUMMINS ENGINES
with CAPS FUEL SYSTEM**



We Recommend Replacing the Transient Suppressor Before Installing a Performance Device.

The Transient Suppressor absorbs the extra current created when the Injection Control Valve closes after an injection event. Without the transient suppressor, high voltage would be transmitted back into the ECM damaging the pump driver circuits and possibly the Injection Control Valve.

Typical Location: The suppressor extends from the main trunk of the engine harness and is mounted with a p-clip to the engine block. It is a small copper colored cylinder with a red and a black wire extending from one end. It is located just below where the injection lines connect to the fuel pump. The injection control valve is located at the rear of the fuel injection pump, on the top of the distributor, and below the accumulator.

Caution: When the transient suppressor is working normally, it will generate heat. The heat generated in the transient suppressor is dependent on the speed of the engine. Care must be taken when replacing the suppressor.

Note: Your CNH or Cummins dealer can provide you with the correct part for replacement and the correct location of the suppressor on your equipment.



CAPS8390 Module



****Note - switch needs to be plugged into harness for module to work properly****

Switch Positions:

- *STOCK
- *LOW, up to 15% HP
- *HIGH, up to 30% HP



DISCLAIMER

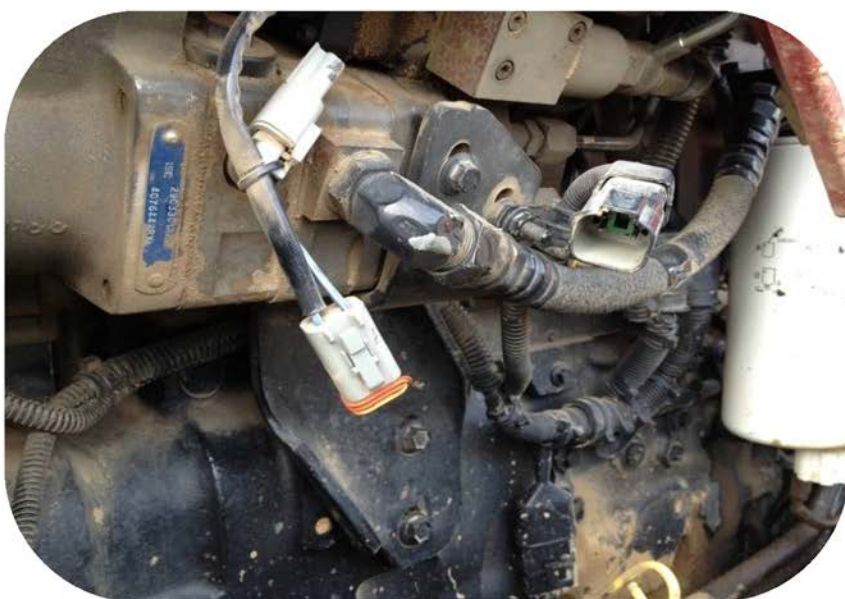
NOT FOR USE IN CALIFORNIA

MODULE DOES NOT BYPASS, DELETE, OR DEFEAT ANY EMISSIONS CONTROL SYSTEMS
If installation assistance is needed, PSI Power is not responsible for any cost associated with third party installation.

**TECH SUPPORT
(812) 618-9168**



Step 1) Locate the ICV injection control valves and disconnect.



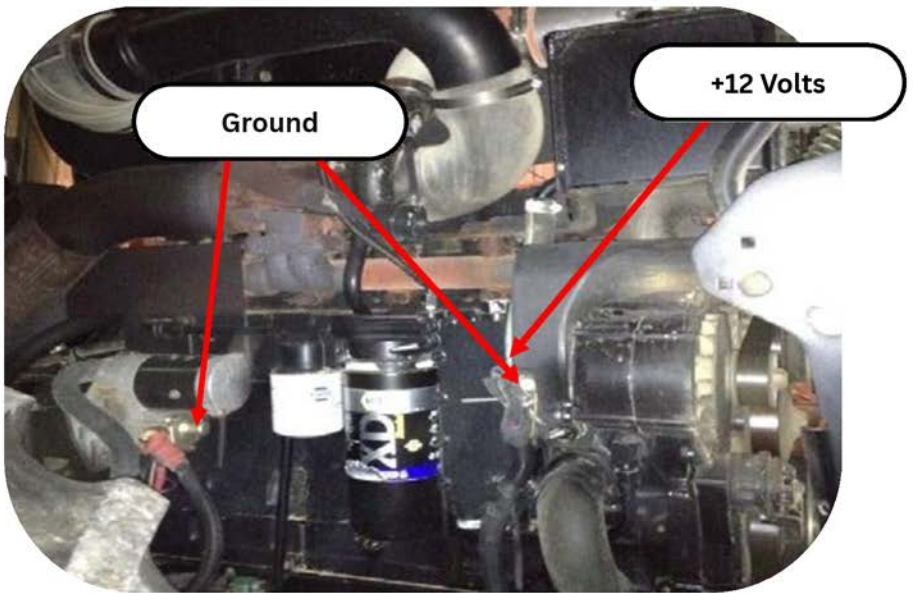
Step 2) 2) Connect the male connector from the module into the stock female plug. Connect the female connector from the module into the stock male connector.



Step 3) Locate the MAP sensor and disconnect.



Step 4) Plug the male MAP sensor connector from the Ag Diesel Solutions harness into the stock female map sensor. Connect the female MAP sensor connector from the module harness into the stock male MAP sensor connector.



Step 5) Connect the red wire with a ring terminal to a constant 12 volt source. Connect the black wire with a ring terminal to a good chassis ground. Wiring can be routed over the engine to the Alternator. Note: Ground is extremely important. Ensure that the Ground is connected to a good chassis/engine ground; the alternator, starter or a ground strap are the recommended grounding locations. Grounding to a painted surface or a random bolt can result in the module or tractor to not operate properly.



Step 6) Mount the box with connector facing down with the provided zip ties in a secure and dry location away from any heat sources. Note: Zip tying onto factory computer wire harness works well

THIS IS A HIGH PERFORMANCE PRODUCT. USE AT YOUR OWN RISK.

Do not use this product until you have carefully read the following agreement. This sets forth the terms and conditions for the use of this product. The installation of this product indicates that the BUYER has read and understands this agreement and accepts its terms and conditions

DISCLAIMER OF WARRANTY AND LIMITATION OF LIABILITY

PSI Power, Inc and its successors, distributors, jobbers, and dealers (hereafter "SELLER") shall in no way be responsible for the product's proper use and service. It is the installer's responsibility to check for proper installation and if in doubt, contact the manufacturer. The SELLER assumes no liability regarding the improper installation or misapplication of its products. BUYER ACKNOWLEDGES IT HAS HAD THE OPPORTUNITY TO FULLY INSPECT THE PRODUCT. ACCORDINGLY, BUYER ACKNOWLEDGES THAT THE PRODUCT IS BEING SOLD IN "AS IS/WHERE IS" CONDITION AND WITH ALL FAULTS. EXCEPT AS OTHERWISE PROVIDED HEREIN, THERE ARE NO EXPRESS WARRANTIES WITH RESPECT TO THE GOODS, AND ALL IMPLIED WARRANTIES, INCLUDING BUT NOT LIMITED TO, IMPLIED WARRANTIES OF FITNESS FOR A PARTICULAR PURPOSE AND MERCHANTABILITY ARE LIKEWISE HEREBY EXPRESSLY AND FULLY DISCLAIMED. SELLER SHALL NOT BE HELD LIABLE FOR SPECIAL, INDIRECT, INCIDENTAL OR CONSEQUENTIAL DAMAGES OF ANY NATURE WITH RESPECT TO THE PRODUCTS (INCLUDING, WITHOUT LIMITATION, LOST PROFITS, LOST SALES, LOSS OF PRODUCTION, PROPERTY DAMAGE, PERSONAL INJURY OR LOSS OR DAMAGE RESULTING FROM INTERRUPTION OR FAILURE IN OPERATION OF THE PRODUCTS) AND BUYER HEREBY EXPRESSLY WAIVES AND DISCLAIMS ALL SUCH LIABILITY CLAIMS. THE BUYER ACKNOWLEDGES AND AGREES THAT THE DISCLAIMER OF LIABILITY CONTAINED HEREIN IS A MATERIAL TERM OF THE SALE OF THE PRODUCT AND, TO THE FULLEST EXTENT PERMITTED BY LAW, BUYER SHALL DEFEND, INDEMNIFY AND HOLD SELLER HARMLESS FROM ANY AND ALL CLAIMS, DEMANDS, CAUSES OF ACTION, CONTROVERSIES, LIABILITIES, FINES, LOSSES, COSTS AND EXPENSES (INCLUDING, BUT NOT LIMITED TO ATTORNEY'S FEES, EXPERT WITNESS EXPENSES AND LITIGATION EXPENSES) ARISING FROM OR RELATED TO SELLER'S PRODUCTS.

LIMITED 3 YEAR WARRANTY

PSI Power, INC. (hereafter SELLER) warrants that the product supplied shall conform to SELLER's specifications and shall be free from defects in design, material or workmanship for 3 years to the original BUYER. This warranty shall not be extended, transferred, assigned or varied except by a written instrument signed by SELLER and BUYER. Products that have been returned to SELLER during the warranty period and accompanied by a dated proof of purchase receipt, **with shipping and handling paid by the BUYER**, and found to be defective in design, material, or workmanship, in SELLER's sole discretion, may be repaired or replaced at SELLER's option and cost. All warranty claims hereunder are subject to approval by SELLER upon examination of the product. If the product is found not to be defective by SELLER, the product may be returned to BUYER at BUYER'S cost. Under no circumstances shall the SELLER be liable for any labor charged or travel time incurred in diagnosis for defects, removal, or reinstallation of this product or any other expenses. This warranty is void on any products that show evidence of misapplication, negligence, improper installation, abuse, lack of proper maintenance or alteration from its original design. IN THE EVENT THAT THE BUYER DOES NOT AGREE WITH THIS AGREEMENT, THE BUYER MAY PROMPTLY RETURN THIS PRODUCT, IN A NEW AND UNUSED CONDITION, IN THE ORIGINAL PACKAGING, WITH A DATED PROOF OF PURCHASE, TO THE PLACE OF PURCHASE WITHIN (30) DAYS FROM THE DATE OF PURCHASE FOR A FULL REFUND. **THE INSTALLATION OF THIS PRODUCT INDICATES THAT THE BUYER HAS READ AND UNDERSTANDS THIS AGREEMENT AND ACCEPTS ITS TERMS AND CONDITIONS.**

TERMS AND CONDITIONS Effective 11/1/2022

