



INSTALLATION  
GUIDE

Driving Performance. Innovating Solutions.

# DZ6106 MODULE

DEUTZ 6.1L TIER IV FINAL ENGINES



[WWW.PSIPOWERPRODUCTS.COM](http://WWW.PSIPOWERPRODUCTS.COM)

[WWW.AGDIESELSOLUTIONS.COM](http://WWW.AGDIESELSOLUTIONS.COM)



FEMALE FUEL  
PRESSURE  
CONNECTOR

MALE FUEL  
PRESSURE  
CONNECTOR

**Position 1 - STOCK (counter clockwise)**  
**Position 2 - LOW, up to 15% HP**  
**Position 3 - HIGH, up to 30% HP**



**\*DISCLAIMER\***

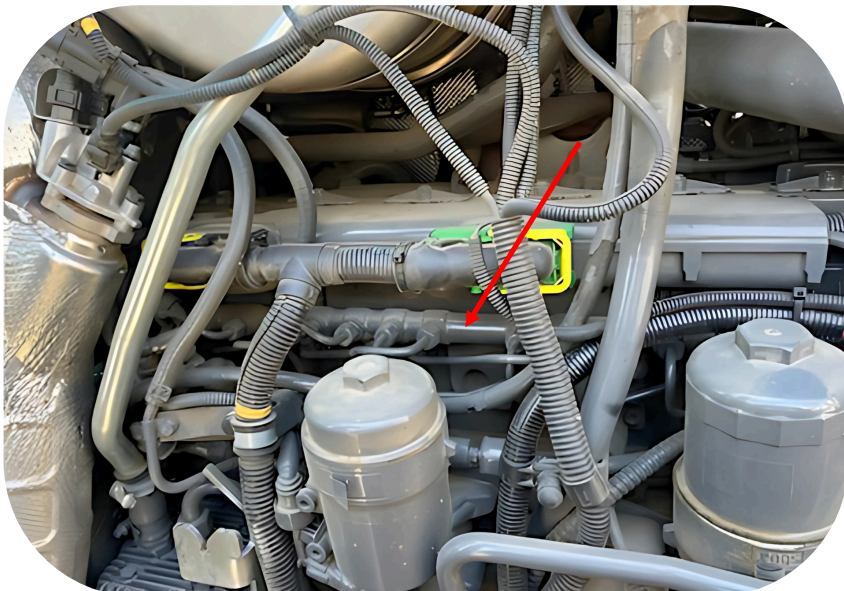
**\*NOT FOR USE IN CALIFORNIA\***

PSI Power recommends removing the module before any warranty work is performed on the piece of equipment the module is installed on.

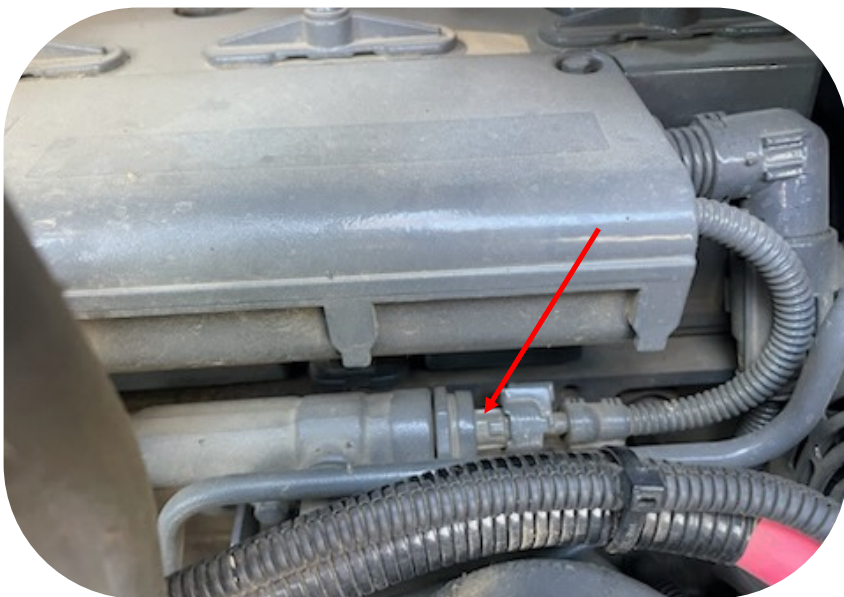
**\*MODULE DOES NOT BYPASS, DELETE, OR DEFEAT ANY EMISSIONS CONTROL SYSTEMS\***

If installation assistance is needed, PSI Power is not responsible for any cost associated with third party installation.

For  
**TECH SUPPORT,**  
Please Call  
**+1 (812) 618-9168**



**Step 1)** Locate the fuel rail on the right side of the engine. Denoted by the multiple fuel lines coming out of it.



**Step 2)** Locate the fuel rail pressure sensor coming out of the end of the fuel common rail.

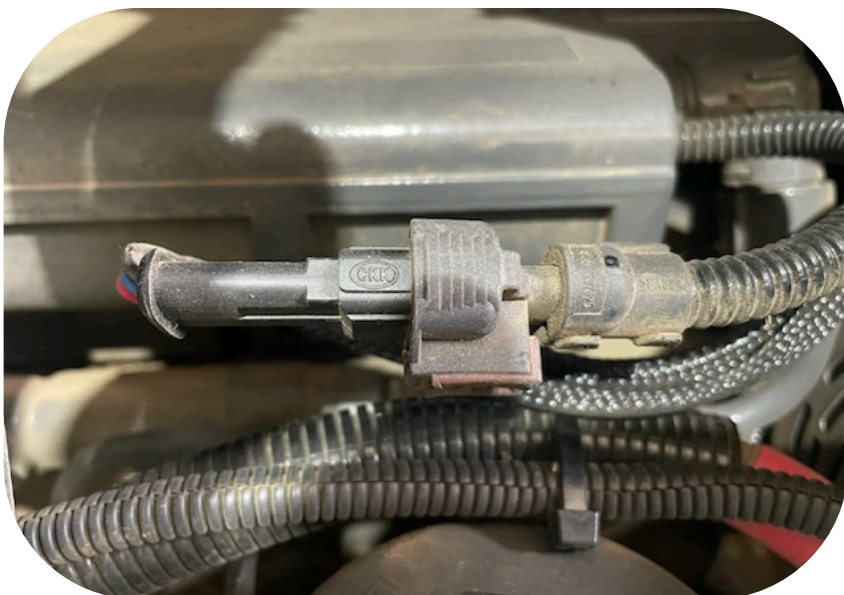


**Step 3)** By depressing the release tab and pulling away from the sensor, disconnect the factory female fuel rail pressure sensor connector from the fuel rail pressure sensor.





**Step 4)** Plug the female module fuel rail connector into the factory fuel rail pressure sensor. Make sure to insert module connector in same orientation the stock connector came out.



**Step 5)** Plug the factor female fuel rail pressure sensor connector into the module male fuel pressure connector. Make sure locking flap secures over the ramp socket.

**Note:** You should hear an audible click when connectors are seated all the way. Check orientation, these connectors can plug in upside down.



**Step 6)** Secure the module in a place away from moving components and extreme heat. Use provided zip ties to mount the module and secure any excess harness.



## **THIS IS A HIGH PERFORMANCE PRODUCT. USE AT YOUR OWN RISK.**

Do not use this product until you have carefully read the following agreement. This sets forth the terms and conditions for the use of this product. The installation of this product indicates that the BUYER has read and understands this agreement and accepts its terms and conditions

### **DISCLAIMER OF WARRANTY AND LIMITATION OF LIABILITY**

PSI Power, Inc and its successors, distributors, jobbers, and dealers (hereafter "SELLER") shall in no way be responsible for the product's proper use and service. It is the installer's responsibility to check for proper installation and if in doubt, contact the manufacturer. The SELLER assumes no liability regarding the improper installation or misapplication of its products. BUYER ACKNOWLEDGES IT HAS HAD THE OPPORTUNITY TO FULLY INSPECT THE PRODUCT. ACCORDINGLY, BUYER ACKNOWLEDGES THAT THE PRODUCT IS BEING SOLD IN "AS IS/WHERE IS" CONDITION AND WITH ALL FAULTS. EXCEPT AS OTHERWISE PROVIDED HEREIN, THERE ARE NO EXPRESS WARRANTIES WITH RESPECT TO THE GOODS, AND ALL IMPLIED WARRANTIES, INCLUDING BUT NOT LIMITED TO, IMPLIED WARRANTIES OF FITNESS FOR A PARTICULAR PURPOSE AND MERCHANTABILITY ARE LIKEWISE HEREBY EXPRESSLY AND FULLY DISCLAIMED. SELLER SHALL NOT BE HELD LIABLE FOR SPECIAL, INDIRECT, INCIDENTAL OR CONSEQUENTIAL DAMAGES OF ANY NATURE WITH RESPECT TO THE PRODUCTS (INCLUDING, WITHOUT LIMITATION, LOST PROFITS, LOST SALES, LOSS OF PRODUCTION, PROPERTY DAMAGE, PERSONAL INJURY OR LOSS OR DAMAGE RESULTING FROM INTERRUPTION OR FAILURE IN OPERATION OF THE PRODUCTS) AND BUYER HEREBY EXPRESSLY WAIVES AND DISCLAIMS ALL SUCH LIABILITY CLAIMS. THE BUYER ACKNOWLEDGES AND AGREES THAT THE DISCLAIMER OF LIABILITY CONTAINED HEREIN IS A MATERIAL TERM OF THE SALE OF THE PRODUCT AND, TO THE FULLEST EXTENT PERMITTED BY LAW, BUYER SHALL DEFEND, INDEMNIFY AND HOLD SELLER HARMLESS FROM ANY AND ALL CLAIMS, DEMANDS, CAUSES OF ACTION, CONTROVERSIES, LIABILITIES, FINES, LOSSES, COSTS AND EXPENSES (INCLUDING, BUT NOT LIMITED TO ATTORNEY'S FEES, EXPERT WITNESS EXPENSES AND LITIGATION EXPENSES) ARISING FROM OR RELATED TO SELLER'S PRODUCTS.

### **LIMITED 3 YEAR WARRANTY**

PSI Power, INC. (hereafter SELLER) warrants that the product supplied shall conform to SELLER's specifications and shall be free from defects in design, material or workmanship for 3 years to the original BUYER. This warranty shall not be extended, transferred, assigned or varied except by a written instrument signed by SELLER and BUYER. Products that have been returned to SELLER during the warranty period and accompanied by a dated proof of purchase receipt, **with shipping and handling paid by the BUYER**, and found to be defective in design, material, or workmanship, in SELLER's sole discretion, may be repaired or replaced at SELLER's option and cost. All warranty claims hereunder are subject to approval by SELLER upon examination of the product. If the product is found not to be defective by SELLER, the product may be returned to BUYER at BUYERS cost. Under no circumstances shall the SELLER be liable for any labor charged or travel time incurred in diagnosis for defects, removal, or reinstallation of this product or any other expenses. This warranty is void on any products that show evidence of misapplication, negligence, improper installation, abuse, lack of proper maintenance or alteration from its original design. IN THE EVENT THAT THE BUYER DOES NOT AGREE WITH THIS AGREEMENT, THE BUYER MAY PROMPTLY RETURN THIS PRODUCT, IN A NEW AND UNUSED CONDITION, IN THE ORIGINAL PACKAGING, WITH A DATED PROOF OF PURCHASE, TO THE PLACE OF PURCHASE WITHIN (30) DAYS FROM THE DATE OF PURCHASE FOR A FULL REFUND. **THE INSTALLATION OF THIS PRODUCT INDICATES THAT THE BUYER HAS READ AND UNDERSTANDS THIS AGREEMENT AND ACCEPTS ITS TERMS AND CONDITIONS.**

***TERMS AND CONDITIONS Effective 11/1/2022***



- **UP TO 30% HORSEPOWER INCREASE**
- **UP TO 10%-20% IN FUEL SAVINGS**
- **NO FACTORY ECM FLASH**
- **FIELD TESTED & DYNO PROVEN**
- **PLUG & PLAY INSTALLATION**

PERFORMANCE ELECTRONICS FOR AGRICULTURE,  
FORESTRY, CONSTRUCTION, TRUCKs, RVs, AND MORE!



**DIESEL  
SOLUTIONS**  
FARM SMART. FARM EFFICIENT.



**7<sup>th</sup> Transmission  
Edition**

[WWW.PSIPOWERPRODUCTS.COM](http://WWW.PSIPOWERPRODUCTS.COM)

[WWW.AGDIESELSOLUTIONS.COM](http://WWW.AGDIESELSOLUTIONS.COM)

