



**INSTALLATION  
GUIDE**

**Driving Performance. Innovating Solutions.**

# LBR1204 MODULE

**12.0L LEIBHERR TIER IV ENGINES**



[WWW.PSIPOWERPRODUCTS.COM](http://WWW.PSIPOWERPRODUCTS.COM)

[WWW.AGDIESELSOLUTIONS.COM](http://WWW.AGDIESELSOLUTIONS.COM)



# **WHY PSI POWER MODULES?**

## **SAVE MORE & GET MORE**

10-20% returns on fuel per hour with up to  
30% more horsepower & torque

## **LINEAR BASED LOAD TECHNOLOGY**

Only supplying power when you need it

## **NO PROGRAMS OR CHANGES**

No programming of the factory ECM or  
changes to fuel pressure

## **TRANSFERABLE**

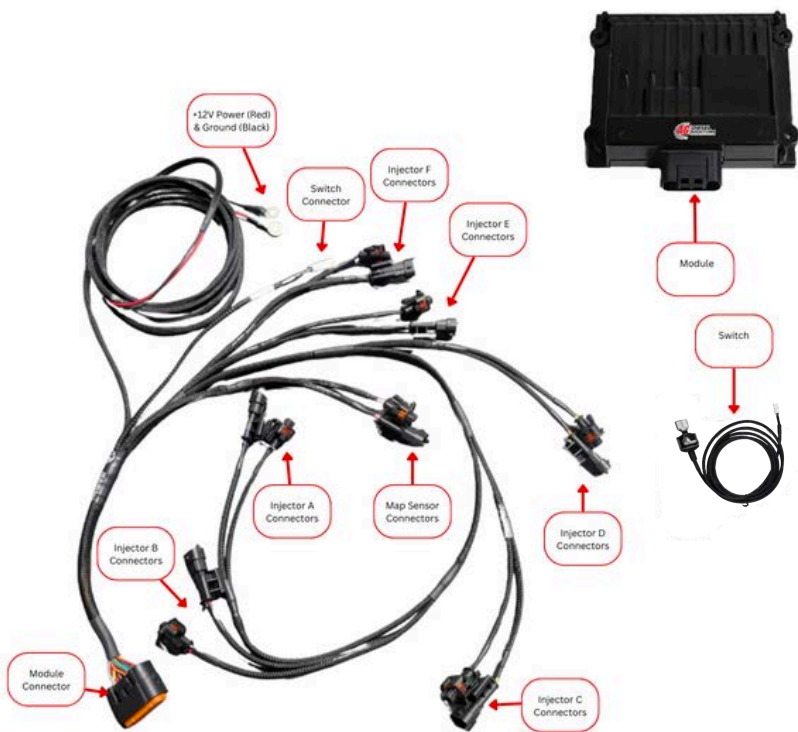
Transferable to new machines with same  
engine, and will not defeat or delete any  
engine components

## **PRODUCTS BENEFITS SECURITY**

Product benefits will not be lost if factory  
tuning is required

## **PEACE OF MIND**

In-House tech support, and 30-day money  
back guarantee



**Position 1 - STOCK (counter clockwise)**  
**Position 2 - LOW, up to 15% HP**  
**Position 3 - HIGH, up to 30% HP**

*\*Mechanical switch will override  
 use of app settings*

**OR**

**Download the “Ag Diesel Connect”  
 app on your Android or iOS devices  
 using the QR code below, or by  
 searching “Ag Diesel Connect” in  
 the app store.**

**Module will default to HIGH setting if  
 switch is not connected.**

**\*DISCLAIMER\***

**\*NOT FOR USE IN CALIFORNIA\***

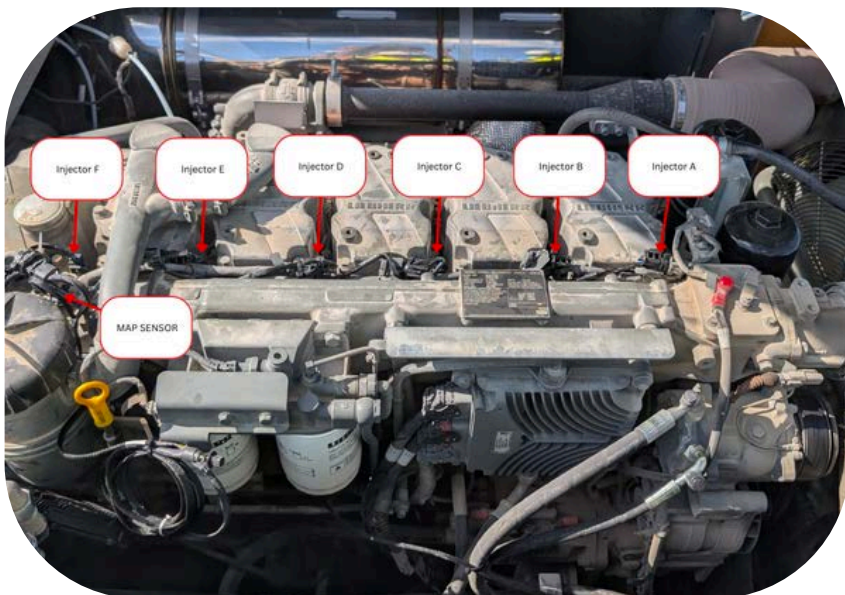


PSI Power recommends removing the module before any warranty work is performed on the piece of equipment the module is installed on.

**\*MODULE DOES NOT BYPASS, DELETE, OR DEFEAT ANY EMMISIONS CONTROL SYSTEMS\***  
 If installation assistance is needed, PSI Power is not responsible for any cost associated with third party installation.

For  
**TECH SUPPORT,**  
 Please Call  
**+1 (812) 618-9168**





**Step 1)** Locate all 6 injector connectors and map sensor on top of the engine shown above.



**Step 2)** Unhook the factory female map sensor connection from the map sensor and connect it to the AG Diesel Solutions harness. Connect the Ag Diesel Solutions female connector back into the map sensor.



**Step 3)** Unhook the factory female injector connectors from all 6 injectors. Connect them to the AG Diesel Solutions harness accordingly. Connect the AG Diesel Solutions female connectors back into each injector accordingly.

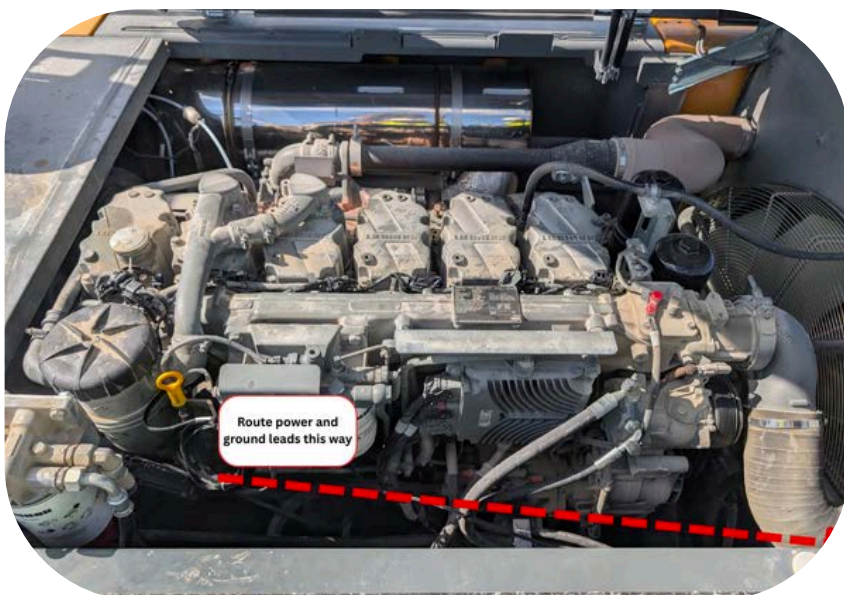


**Step 4)** Locate the machines engine batteries. They are located behind the unmarked engine cover on the “Drivers Side” of the machine.





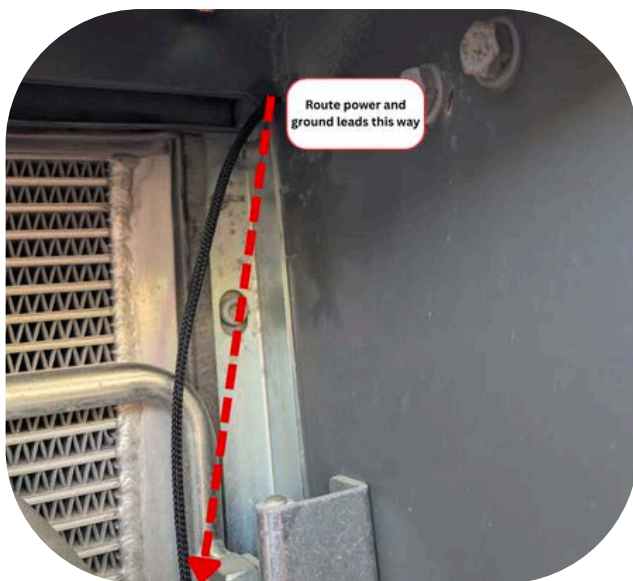
**Step 5)** Once you have located the batteries, measure them with a multimeter to find 12V. **\*\*THIS MODULE NEEDS TO BE HOOKED UP TO 12 VOLTS ONLY\*\***



**Step 6)** Route the power and ground leads per instructions above.



**Step 7)** Continue routing power and ground leads per instructions above.



**Step 8)** Route the power and grounds through the small hole between weather stripping and metal as picture above shows.





**Step 9)** Connect the **Red Wire (Constant 12V)** to **12V on the battery**. Connect the **Black Wire (Ground)** to the negative on the battery.



**Step 10)** Connect the module to the harness. Secure and mount the module away from heat or moving parts. Connect the rotary switch to the harness and mount where desired.





# **MODULE INSTALL CHECKLIST**

## **INSPECT CONNECTOR PINS**

Verify that all connector pins are clean and free of corrosion to ensure a stable electrical connection.

## **SECURE HARNESS PLUGS**

Confirm each harness plug is fully seated by listening for an audible “click.”

## **ROUTE HARNESS PROPERLY**

Mount and secure the harness away from hot or moving engine components.

## **POSITION PLUG CORRECTLY**

Orient the module connector plug downward to minimize moisture and debris accumulation.

## **LOCATE YOUR COMPONENTS**

Identify the location of the bypass plug and switch for future service or troubleshooting needs.

## **THIS IS A HIGH PERFORMANCE PRODUCT. USE AT YOUR OWN RISK.**

Do not use this product until you have carefully read the following agreement. This sets forth the terms and conditions for the use of this product. The installation of this product indicates that the BUYER has read and understands this agreement and accepts its terms and conditions

### **DISCLAIMER OF WARRANTY AND LIMITATION OF LIABILITY**

PSI Power, Inc and its successors, distributors, jobbers, and dealers (hereafter "SELLER") shall in no way be responsible for the product's proper use and service. It is the installer's responsibility to check for proper installation and if in doubt, contact the manufacturer. The SELLER assumes no liability regarding the improper installation or misapplication of its products. BUYER ACKNOWLEDGES IT HAS HAD THE OPPORTUNITY TO FULLY INSPECT THE PRODUCT. ACCORDINGLY, BUYER ACKNOWLEDGES THAT THE PRODUCT IS BEING SOLD IN "AS IS/WHERE IS" CONDITION AND WITH ALL FAULTS. EXCEPT AS OTHERWISE PROVIDED HEREIN, THERE ARE NO EXPRESS WARRANTIES WITH RESPECT TO THE GOODS, AND ALL IMPLIED WARRANTIES, INCLUDING BUT NOT LIMITED TO, IMPLIED WARRANTIES OF FITNESS FOR A PARTICULAR PURPOSE AND MERCHANTABILITY ARE LIKEWISE HEREBY EXPRESSLY AND FULLY DISCLAIMED. SELLER SHALL NOT BE HELD LIABLE FOR SPECIAL, INDIRECT, INCIDENTAL OR CONSEQUENTIAL DAMAGES OF ANY NATURE WITH RESPECT TO THE PRODUCTS (INCLUDING, WITHOUT LIMITATION, LOST PROFITS, LOST SALES, LOSS OF PRODUCTION, PROPERTY DAMAGE, PERSONAL INJURY OR LOSS OR DAMAGE RESULTING FROM INTERRUPTION OR FAILURE IN OPERATION OF THE PRODUCTS) AND BUYER HEREBY EXPRESSLY WAIVES AND DISCLAIMS ALL SUCH LIABILITY CLAIMS. THE BUYER ACKNOWLEDGES AND AGREES THAT THE DISCLAIMER OF LIABILITY CONTAINED HEREIN IS A MATERIAL TERM OF THE SALE OF THE PRODUCT AND, TO THE FULLEST EXTENT PERMITTED BY LAW, BUYER SHALL DEFEND, INDEMNIFY AND HOLD SELLER HARMLESS FROM ANY AND ALL CLAIMS, DEMANDS, CAUSES OF ACTION, CONTROVERSIES, LIABILITIES, FINES, LOSSES, COSTS AND EXPENSES (INCLUDING, BUT NOT LIMITED TO ATTORNEY'S FEES, EXPERT WITNESS EXPENSES AND LITIGATION EXPENSES) ARISING FROM OR RELATED TO SELLER'S PRODUCTS.

**\*\*\*TERMS AND CONDITIONS CONTINUE ON NEXT PAGE\*\*\***

## **LIMITED 3 YEAR WARRANTY**

PSI Power, INC. (hereafter SELLER) warrants that the product supplied shall conform to SELLER's specifications and shall be free from defects in design, material or workmanship for 3 years to the original BUYER.

This warranty shall not be extended, transferred, assigned or varied except by a written instrument signed by SELLER and BUYER. Products that have been returned to SELLER during the warranty period and accompanied by a dated proof of purchase receipt, with shipping and handling paid by the BUYER, and found to be defective in design, material, or workmanship, in SELLER's sole discretion, may be repaired or replaced at SELLER's option and cost. All warranty claims hereunder are subject to approval by SELLER upon examination of the product. If the product is found not to be defective by SELLER, the product may be returned to BUYER at BUYER'S cost. Under no circumstances shall the SELLER be liable for any labor charged or travel time incurred in diagnosis for defects, removal, or reinstallation of this product or any other expenses. This warranty is void on any products that show evidence of misapplication, negligence, improper installation, abuse, lack of proper maintenance or alteration from its original design. IN

THE EVENT THAT THE BUYER DOES NOT AGREE WITH THIS AGREEMENT, THE BUYER MAY PROMPTLY RETURN THIS PRODUCT, IN A NEW AND UNUSED CONDITION, IN THE ORIGINAL PACKAGING, WITH A DATED PROOF OF PURCHASE, TO THE PLACE OF PURCHASE WITHIN (30) DAYS FROM THE DATE OF PURCHASE FOR A FULL REFUND. THE INSTALLATION OF THIS PRODUCT INDICATES THAT THE BUYER HAS READ AND UNDERSTANDS THIS AGREEMENT AND ACCEPTS ITS

**TERMS AND CONDITIONS Effective 11/1/2022**

For

**TECH SUPPORT,**  
Please Call

**+1 (812) 618-9168**





- **UP TO 30% HORSEPOWER INCREASE**
- **UP TO 10%-20% IN FUEL SAVINGS**
- **NO FACTORY ECM FLASH**
- **FIELD TESTED & DYNO PROVEN**
- **PLUG & PLAY INSTALLATION**

PERFORMANCE ELECTRONICS FOR AGRICULTURE,  
FORESTRY, CONSTRUCTION, TRUCKs, RVs, AND MORE!



**DIESEL  
SOLUTIONS**  
FARM SMART. FARM EFFICIENT.



**7<sup>th</sup> Transmission  
Edition**

[WWW.PSIPOWERPRODUCTS.COM](http://WWW.PSIPOWERPRODUCTS.COM)

[WWW.AGDIESELSOLUTIONS.COM](http://WWW.AGDIESELSOLUTIONS.COM)

